



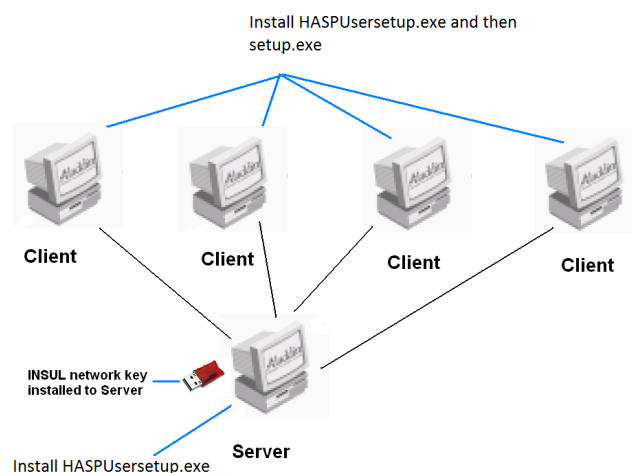
Sound Insulation Prediction Software

Installation Instructions for Network INSUL (version 9.0)

Introduction

INSUL can be run over a Local Area Network (LAN). You should install the Licence Manager on one computer, this would normally be a server or a computer that runs all the time and that each client computer can access. The Licence Manager is installed by running the HASPUsersetup.exe file on the USB flash drive, this file can also be downloaded from the INSUL website (www.insul.co.nz).

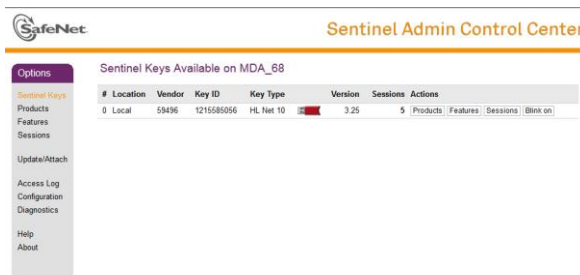
INSUL should be installed on each client computer that requires access to INSUL. On each client computer on the network you must also install the Hasp drivers using the HASPUsersetup.exe file. Once the Hasp drivers have been installed the client computer will be able to communicate with the network key via the Licence Manager to determine if any licenses are available. When you purchase INSUL you purchase runtime licences that determine how many copies of INSUL can be run at the same time. If you need additional runtime licences these can be purchased at a later date and the network key updated.



Install INSUL Setup

FILE SERVER

1. Run the file HASPUserSetup.exe on the computer you have decided to use as the Licence Manager. Now plug in the network key.
2. Type **localhost:1947** in the address bar of your internet browser (Windows Explorer or Chrome or Firefox etc). This starts the Hasp License Manager (Sentinel Admin Control Center).



3. The network key should be shown in the list of keys available. You can monitor and change various parameters through the Licence Manager.

Client Computers

4. Go to the INSUL website and download the setup file from the link <http://www.insul.co.nz/media/29690/setup.exe> and install INSUL by running the file.
5. Read the instructions on the Welcome page and click the next button.
6. Read the Software license Agreement and if you accept the terms of the licence, click "I accept the terms in the licence agreement", then the next button.
7. If you wish to read the INSUL release notes you may scroll down the Readme Information then click the Next button.
8. To choose a particular destination directory for INSUL's files click the Browse button. To accept the default destination directory click the Next button.
9. You will be asked if you want to install INSUL for anyone who uses the computer or for the user only. It is normal to choose the default which is for anyone who uses the computer.
10. The program will now be installed and you can click Finish to exit the installation Wizard. You can now run the program from the normal Windows "Start " menu.
11. When first run INSUL will display a form allowing you to choose what materials databases you wish to display. It is recommended that you first choose to display

just one region to avoid being overwhelmed by the number of materials. You can change this later from the settings menu.

12. INSUL refers to several databases for the properties of materials. There are two categories of database, INSUL's ones and the user's ones. The user's materials files are stored in the user's application data folder (by default this folder is c:\users\%username%\appdata\roaming\Marshall Day Acoustics\Insul90\Materials). The users databases could be moved to a central location for instance on a server so that any custom materials would be available to all users on the network. The location of the user databases can be changed in the Settings form of INSUL. The INSUL databases however cannot be easily changed by the user and may be over ridden by updates so it is recommended these are not altered. The INSUL databases are stored in C:\ProgramData\Marshall Day Acoustics\INSUL90\Materials and this location cannot be changed.
13. INSUL is updated from time to time with new releases. These are known by their release number, for instance version 9.0.4 is release 4 of version 9.0 The user can check for updates with the "Check for updates" button on the About form, or check the tick box on that form "automatically check for updates". It is a good time now to check for updates and download and install the latest release.